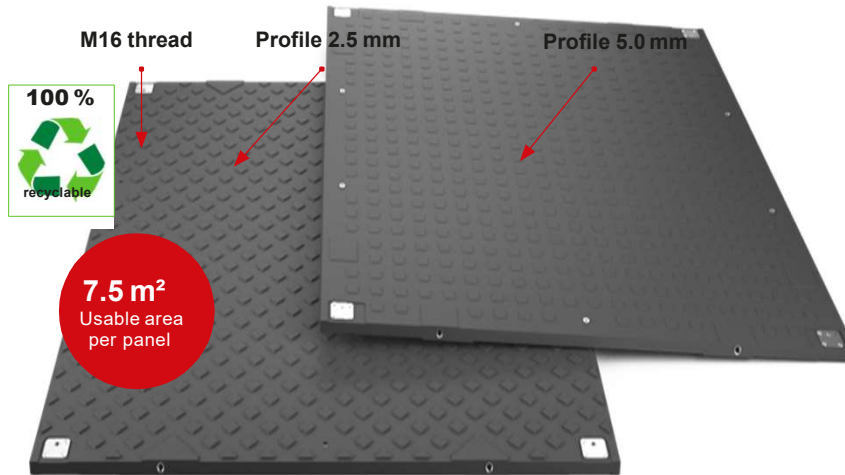


# MRS BAUSTRASSE

Rental|Sales|Service

## ► Mobile Road Systems

### MRS - Heavy 2.5



#### ► Properties

The **MRS - Heavy Ground Protection Panels** are screwed together in both length and width, creating a permanently connected driveway or work platform for heavy loads. The load-bearing capacity of the subsurface is significantly optimized.

**Material:** polyethylene, high molecular weight

**Dimensions:** 3000 x 2500 x 45.5 mm (incl. profile)

**Weight per panel:** approx.. 288 kg

**Surface / colour:** 5.0 & 2.5 mm profile / black-coloured

**Load capacity:** approx. 160 t

(depending on the ground conditions)

**Transport per truck:** 80 units (600 m<sup>2</sup>)



Mobile crane  
working spaces



Heavyload  
transports



Mobile  
logistics



Wind power  
construction



Temporary  
walkways



Road construction and  
access routes



Transmission



Concerts  
and events



Mobile  
parking spaces

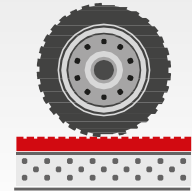


Tent floors

■ **Lower transportation costs with MRS - Heavy 2.5** panels. They are easier to transport than most alternative road mats for temporary use.



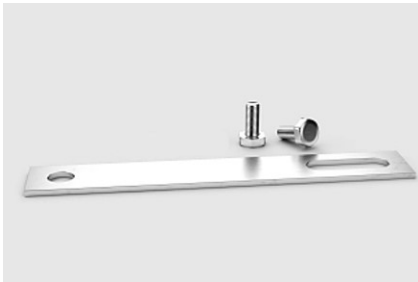
M: +49 176 11007755



## ► Accessories

# MRS - Heavy 2.5 Accessories

The **MRS - Heavy 2.5 Ground Protection Panels** are easy to transport with a forklift (using a **load handling device** and a **four-strand chain sling**) and quickly connected with **M16 screws**.



### ■ Metal Connectors (Universal) M16 Screws

The metal connectors are used to screw ground protection panels together.

Weight: 0.285 kg

Order No.: 50 100 001



### ■ Load Handling Devices

Load capacity 4 pieces each: 500 kg

Load capacity 1 piece each: 170 kg

This load handler is mandatory for MRS - Heavy 2.5.

Weight / piece 0.462 kg

Weight / set (4 pieces): 1.85 kg



### ■ MRS Heavy 2.5 - Ramps

■ **2500 mm length** with 3 screw holes Weight: 15 kg

■ **3000 mm length** with 4 screw holes Weight: 23 kg

